

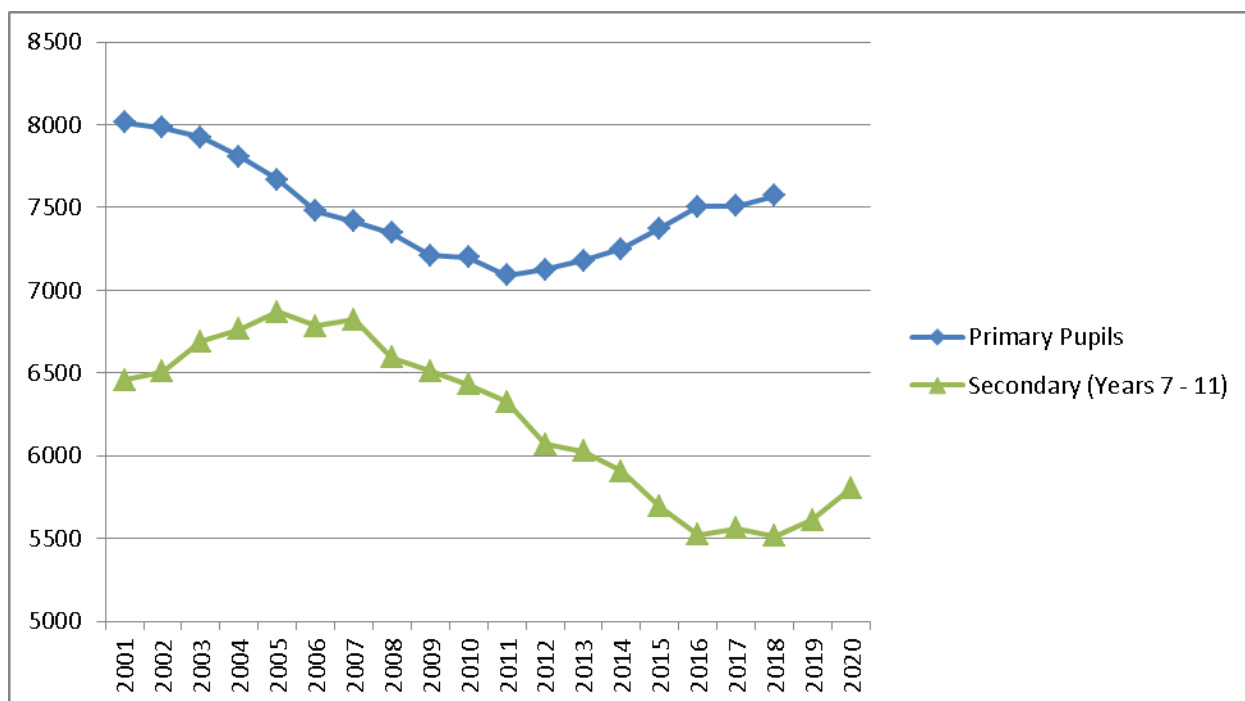
**Management of Surplus Places**

A review of surplus places between academic years 2008-09 and 2012-13 actually shows for Primary schools an increase in surplus places initially followed by a gradual decline. For Secondary schools the surplus is actually increasing over the period. However these statistics require some points of explanation.

Year	Surplus as % (Prim)	Surplus as % (Sec)
2008-2009	14.7%	6.3%
2009-2010	17.6%	9.9%
2010-2011	17.7%	11.9%
2011-2012	16.3%	14.8%
2012-2013	15.5%	16.2%

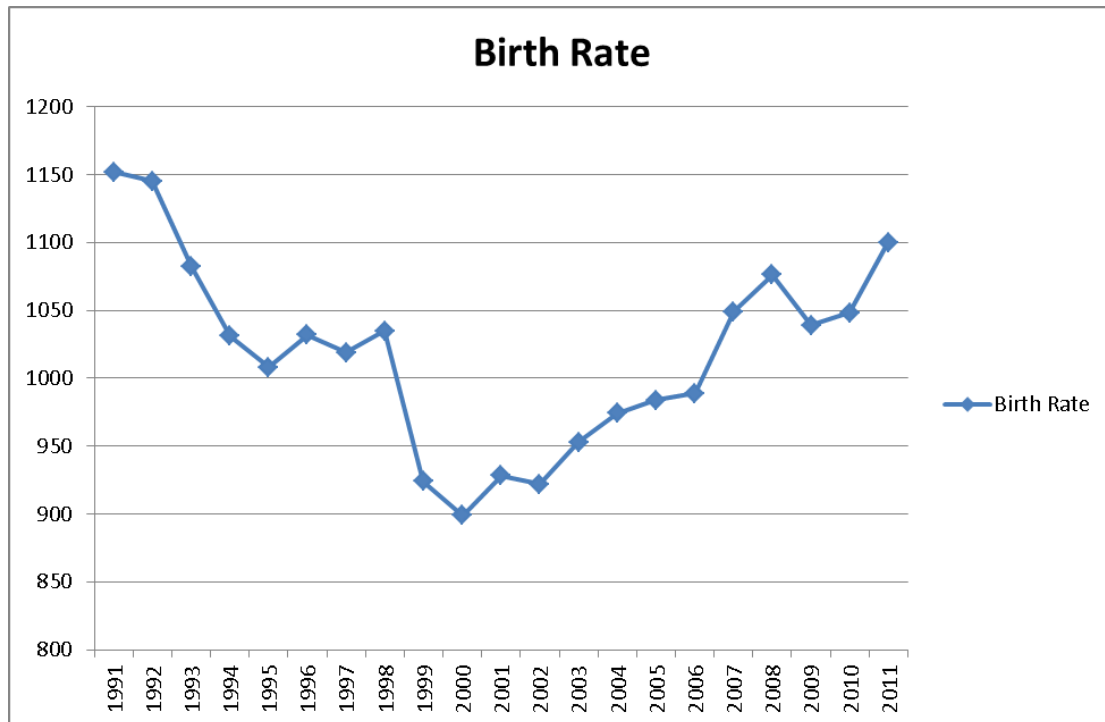
**Points to note**

- Numbers on roll for both sectors have decreased over the period due to a drop in birth rates and thereby increasing the surplus.



- There is broadly a seven year lag between primary and secondary and therefore the change in trend around 2010/11 will be reversed for secondary provision around 2017/18

- The birth rate has now increased in recent years and we forecast this will be reflected in an increase in numbers on roll which will reduce surplus places in the Primary sector initially followed by the Secondary Schools. The number of births in Denbighshire was at its highest since 1992.



- In 2008-09 the surplus places for Secondary Schools was actually at what might be considered a lower than desired level of 6.60%.
- The County is roughly split into deficit of places in the north and surplus in the south so in some places capacity has needed to increase to meet demand.
- The increase in capacity in the Secondary sector is partly as a result of the Learning Centres built in Prestatyn, Brynhyfryd and Dinas Bran. It is also as a result of additional accommodation at Ysgol Glan Clwyd to meet the need for increased demand for Welsh medium education.
- The growth in demand for Welsh medium education at primary level also has to be addressed.
- Rhyl High Scholl and Blessed Edward Jones no longer had 6th form pupils by 2010-11 but did not lose any capacity which increases their surplus figures.

The issue of school places is therefore a complex and diverse one.

### **The Modernising Education Approach**

Since 2009 there has been a specific and targeted approach to managing school places. Modernising education became a corporate priority and the framework put in place through a number of policies which included the management of surplus and deficit places. Integral to the approach has been the need to manage places through long term planning and consultation. This was a lesson learnt from the previous approach to managing school places in 2005. Therefore whilst much work has been undertaken since 2009 the impact of this on surplus places is yet to have its full impact and has only started to be evident in the figures since 2010.

The County has been mapped into 7 geographical areas and all are to be reviewed. To date 3 areas have been reviewed with a focus on primary provision. The key outcomes of these reviews are as follows:-

#### **Prestatyn Area Review**

Agreement that the main three English medium schools should have a capacity of c420 places. The opening of Ysgol Clawdd Offa providing a permanent capacity of 420 places in September 2008 increased the overall supply level for English medium education. The consequent removal of excess capacity was to be achieved by reducing the capacity of Ysgol Penmorfa by removal of mobiles and by amalgamating Bodnant Infants and Juniors to a c420 capacity school via the removal of mobiles. This decision was based on future forecasts of growth in the Primary sector as a consequence of an increased birth rate. For Welsh medium education it was agreed to extend the capacity of Ysgol y Llys to 420 pupils by September 2014.

This strategy has enabled the pupil numbers at Bodnant Community School to be decreased for the school to become a 420 school and has allowed the numbers at Ysgol Clawdd Offa to gradually increase. By 2018 it is anticipated that there will be 293 pupils at this school, a 77% increase in pupils from 2010.

	Pupil Numbers	Capacity	Surplus / Deficit	%
Actual 2010				
English	1386	1737	351	20.2%
Welsh	250	253	3	1.19%
Actual 2013				
English	1380	1617	237	14.66%
Welsh	245	312	67	21.47%
Forecast 2018				
English	1398	1617	219	13.54%
Welsh	328	420	92	21.9%

### Dee Valley East

The Dee Valley East review concluded that there needed to be a review of the Ysgol Bryn Collen and Ysgol Gwernant site in Llangollen and that due to low pupil numbers Ysgol Llantysilio was no longer sustainable. The rationale behind increasing capacity in the town of Llangollen was to allow Ysgol Gwernant, the Welsh Medium school which had a deficit of places to expand to meet increased parental demand. The closure of Ysgol Llantysilio was completed in August 2010 and the completion of extension works to the Ysgol Bryn Collen / Ysgol Gwernant site in Llangollen in September 2011. The expansion of Ysgol Gwernant has also created capacity to enable the closure of Ysgol Glyndyfrdwy to be proposed.

	Pupil Numbers	Capacity	Surplus / Deficit	%
Actual 2009				
English	157	187	30	16%
Welsh	102	110	8	7.27%
Actual 2013				
English	129	158	29	18.35%
Welsh	118	135	17	12.6%
Forecast 2018				
English	128	158	30	19%
Welsh	120	135	15	11.1%

### Edeyrnion (Dee Valley West)

The outcomes from the review were a set of proposals which has lead to the closure of Ysgol Glyndyfrdwy in September 2012, the closure of Ysgol Llandrillo and Ysgol Maes Hyfryd and the creation of a new area school, initially on both sites but on a single site by 2014 in Cynwyd. The review also agreed to recommend formal federation between Ysgol Bettws Gwerful Goch and Ysgol Bro Elwern and Ysgol Carrog and Ysgol Caer Drewyn. This will allow the removal of 30% of surplus places in the area by the summer of 2014.

Based on current forecasts without the recommendations there would be an overall surplus of 53.5% by 2018 as opposed to the current forecast of 36.7%

	Pupil Numbers	Capacity	Surplus / Deficit	%
Actual 2011				
English	118	199	81	40.7%
Welsh	187	313	126	40.25%
Actual 2013				
English	105	182	77	42.3%
Welsh	152	238	86	36.1%
Forecast 2018				
English	100	182	82	45%
Welsh	138	194	56	28.9%

## **Ruthin**

Approval was granted for a range of proposals to address surplus places and improvements to schools in the Ruthin area by Cabinet in June 2013. The proposals included the amalgamation of Ysgol Clocaenog and Ysgol Cyffylliog, the closure of Ysgol Llanbedr, the federation of Ysgol Llanfair and Pentrecelyn alongside proposals for investment in new facilities in the town to serve Ysgol Penbarras and Rhos Street School which could lead to the closure of Ysgol Rhewl.

The current capacity of schools in the Ruthin area is 1213 full-time pupil places. Based on historical numbers, the standard pupil projections and the revised pupil forecasts for 2017/18 there is no justification for retaining an overall capacity of 1213.

Based on historical trends and standard pupil projections, an overall capacity of 950 full-time pupil places would be sufficient to meet demand. However, additional capacity may be required to cater for potential increase in demand resulting from birth rate increases and housing developments.

Therefore an overall capacity 1050 full-time places would meet the current demand and provide sufficient surplus capacity to meet any increase in demand over the coming years. Based on the lowest projection for 2017/18 of 916, this would leave 134 surplus places, equivalent to 12.8%.

Dovetailing into this work is the centralised Admissions process which is now managing the allocation of places from a countywide perspective to redress the imbalance of surplus/deficit places between some neighbouring schools.

### **Mobile accommodation**

In line with WG directives the Authority is seeking to remove mobile accommodation. See the table below for the reduction since December 2007.

Mobile Accommodation	Dec-07	Jan-13
Secondary	29	24
Primary	28	22
Special	3	3

This represents a decrease of 18%

A further 7 mobile classrooms are planned to be withdrawn upon completion of the Welsh Medium Primary School building programme in the north of the county, (Ysgol Dewi Sant, Ysgol y Llys and Ysgol Twm o'r Nant) and the rationalisation of Bodnant Community School onto one site.

The on-going area reviews are also likely to identify further mobile classrooms which can be removed, particularly in the Ruthin area.

The proposals within the 21<sup>st</sup> Century Schools Programme would allow for the removal of 3 mobiles at Ysgol Glan Clwyd and 9 at St Brigids.